

Correct as at 24th May 2019. It may be superseded at any time.

Extract taken from: NZTA Vehicle Portal > VIRMs > Light vehicle repair certification > Vehicle identification

1 Vehicle identification

1-1 VIN and chassis number

Reasons for rejection

Mandatory requirements

1. A vehicle first registered or re-registered in New Zealand before 1 April 1994 does not have a VIN or chassis number ([Note 1](#)) ([Figure 1-1-1](#), [Figure 1-1-2](#)).
2. A vehicle first registered or re-registered in New Zealand from 1 April 1994 does not have a VIN number ([Note 1](#)) ([Figure 1-1-1](#), [Figure 1-1-2](#)).
3. A VIN number is not valid ([Note 2](#)).

Condition

4. A VIN or chassis number has been (Note 1 and Note 3):
 - a) removed, or
 - b) erased, or
 - c) altered, or
 - d) defaced, or
 - e) obscured, or
 - f) destroyed, or
 - g) obliterated, or
 - h) affixed unlawfully or by unauthorised persons ([Note 3](#)).

Note 1

The repair certifier must record the VIN number. The chassis number may be used as a technical reference.

Note 2

A vehicle without a VIN must be referred to a VIN issuing agent ([VTNZ](#), [VINZ](#), [NZAA](#)) to have a VIN assigned.

Note 3

A valid VIN is a unique number that has been assigned to the vehicle in the vehicles country of origin or by a person appointed by the NZTA. It consists of 17 characters that never contain the letters I, O or Q, and that is capable of being decoded to provide identifying information about the vehicle.

Note 4

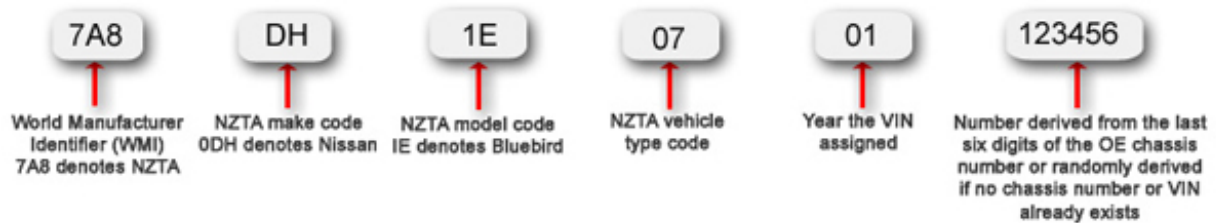
If the vehicle inspector has reason to believe that the VIN or chassis number has been tampered with in any way, they must advise the NZ Police.

Note 5

If the VIN is removed or replaced during repair, the repair certifier must provide the TSD agent with all relevant information describing which parts of the vehicle were affected by the repairs and the source of any parts used (including the registration plates, VIN or chassis number of any donor vehicles). The TSD agent will complete the required documentation and reattach the VIN.

Figure 1-1-1. Structure of a VIN issued by the NZ Transport Agency

Pre-29 November 2009



Post-29 November 2009

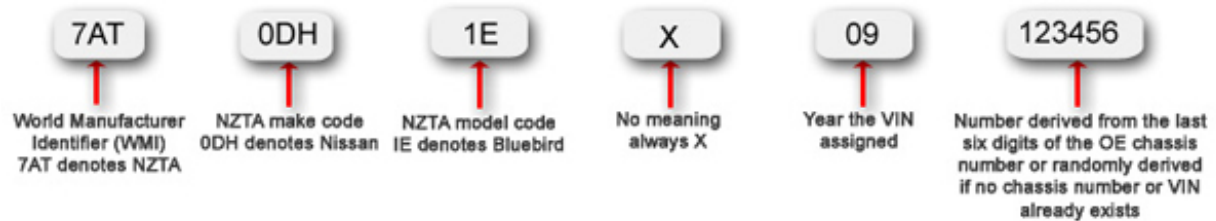
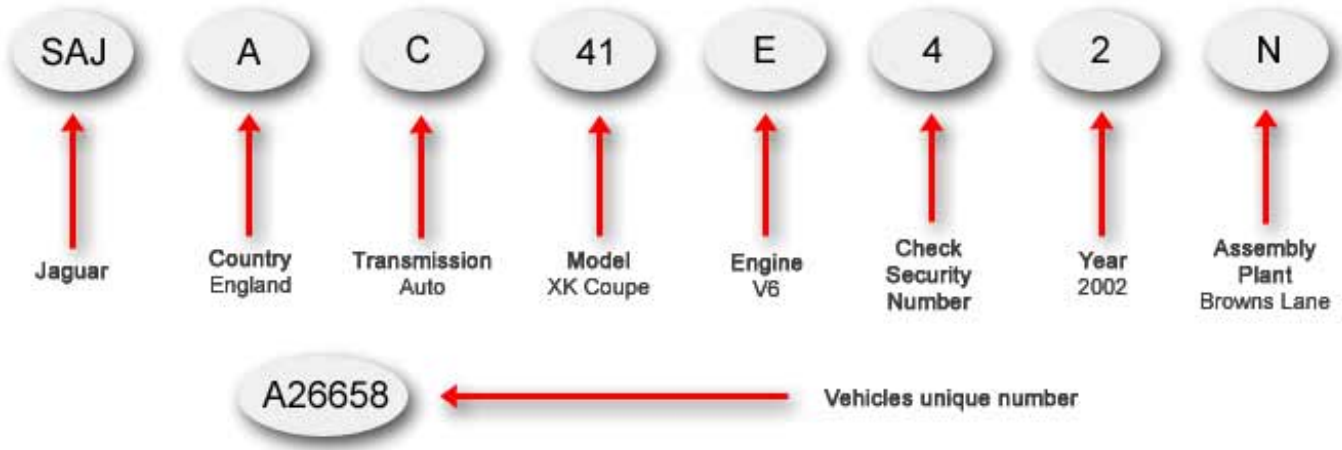
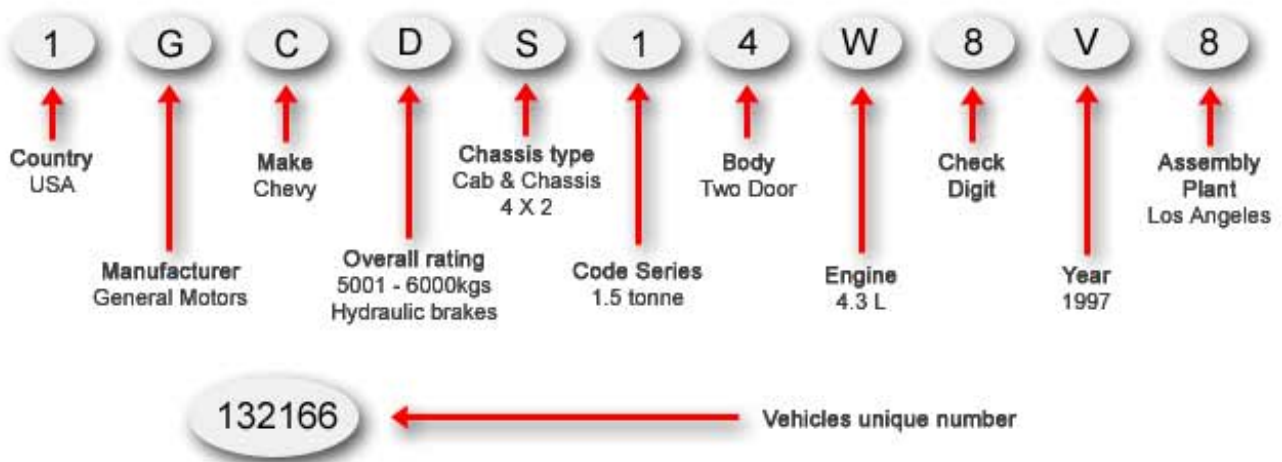


Figure 1-1-2. Structure of a VIN issued by the vehicle manufacturer

Car



Truck



Summary of legislation

Applicable legislation

- [Land Transport Rule: Vehicle Standards Compliance 2002.](#)

Mandatory requirements

1. A vehicle first registered or re-registered in New Zealand before 1 April 1994 must have a chassis number or VIN.
2. A vehicle first registered or re-registered in New Zealand from 1 April 1994 must have a VIN.

Condition

3. A VIN or chassis number must not have been removed, erased, altered, defaced, obscured, destroyed, obliterated or affixed unlawfully or unauthorised.