

Reference material 32

Sample Australian Design Rules (ADR) compliance plates

Motor vehicle standards compliance plates (in use from October 1989 - current style)

General use Colour: Other than red, green, blue or yellow

APPROVAL NO. 10023	CATEGORY MA
EPSILON PTY LTD DELTA 230 GL	
GVM 10/89	SEATS 5 VIN EAG12345678901234
THIS VEHICLE WAS MANUFACTURED TO COMPLY WITH THE MOTOR VEHICLE STANDARDS ACT 1989	

Motor vehicles except group L (100mm x 50mm)

APPROVAL NO. 10024	CATEGORY LC
EPSILON PTY LTD DELTA ZS 350 GL	
10/89	VIN EAG12345678901234
THIS VEHICLE WAS MANUFACTURED TO COMPLY WITH THE MOTOR VEHICLE STANDARDS ACT 1989	

Group L vehicles only (95mm x 35mm)

Trailer Colour: Other than red, green, blue or yellow

MAKE-MODEL	DELTA ZS-350		
DATE	10/89	ATM	31.50 TONNE
VIN	ABC09876543211234	APPROVAL No.	9200 AA
THIS TRAILER WAS MANUFACTURED BY			
EPSILON TRAILERS PTY LTD			
TO COMPLY WITH THE MOTOR VEHICLE STANDARDS ACT 1989 COMPLIANCE MARK APPROVAL NUMBERS			
9998 CS	9997 FB	9996 SS	
THIS PLATE IS AFFIXED WITH THE APPROVAL OF THE ADMINISTRATOR MOTOR VEHICLE STANDARDS			

Trailers over 4.5 tonnes ATM (150mm x 90mm)

For general use

AMVCB Second edition compliance plates (in use before 1 July 1988 and until 1 July 1991)

General use Colour: Other than red, green, blue or yellow

DELTA 10/89	GAMMA STATION WAGON EAG162201G0015002	
GVM	kg	SEATING CAP. 5
WAS MANUFACTURED BY		
EPSILON PTY LTD		
TO COMPLY WITH AUSTRALIAN DESIGN RULE NOS		
1, 2, 3A, 4D, 5B, 6, 7, 8, 10B, 11, 12, 14, 15, 16, 18A, 20, 21, 22A, 23B, 24A, 25A, 28A, 29, 31, 34A, 37, 60/00		
THIS PLATE IS AFFIXED WITH THE APPROVAL OF THE AUSTRALIAN MOTOR VEHICLE CERTIFICATION BOARD		

Motor vehicles except motorcycles (90 mm x 90 mm)

THIS MOTORCYCLE WAS MANUFACTURED BY EPSILON PTY LTD	
TO COMPLY WITH ADR NOS: 33A, 38A	
DELTA	ZS-350
10/89	ABC12345678901234
COMPLIANCE PLATE APPROVAL NO. 1234	
AUSTRALIAN MOTOR VEHICLE CERTIFICATION BOARD	

Motorcycles only (100mm x 40mm)

Reference material 32

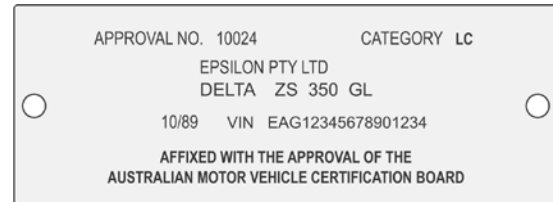
Sample Australian design rules (ADR) compliance plates (cont.)

AMVCB Third edition compliance plates (in use after 1 July 1988 and until 1 July 1992)

General use Colour: Other than red, green, blue or yellow



Motor vehicles except motorcycles (100mm x 50mm)



Motorcycles only (95mm x 35mm)