

Correct as at 26th April 2026. It may be superseded at any time.

Extract taken from: In-service certification (WoF and CoF) > Motorcycles > Vehicle identification > VIN and chassis number

1-1 VIN and chassis number

Important Ensure that the VIN or chassis number is recorded in full on the checksheet.

This number must be:

- the VIN if fitted – not the chassis number (locally allocated VIN)
- the stamped VIN on the VIN plate – not the VIN etched on the glazing.

Also refer to **Table 1-1-1. Location of New Zealand VIN numbers, Figure 1-1-1. Structure of a VIN issued by the NZ Transport Agency and Figure 1-1-2. Structure of a VIN issued by the vehicle manufacturer.**

Reasons for rejection

Mandatory requirements

1. A vehicle first registered or re-registered in New Zealand before 1 April 1994 does not have a VIN or chassis number (Note 1) (Note 4).
2. A vehicle first registered or re-registered in New Zealand from 1 April 1994 does not have a VIN number (Note 1) (Note 4).
3. A VIN number is not valid (Note 2).

Condition

4. A VIN or chassis number has been (Note 1) (Note 3) (Note 4):
 - a) removed, or
 - b) erased, or
 - c) altered, or
 - d) defaced, or
 - e) obscured, or
 - f) destroyed, or
 - g) obliterated, or
 - h) affixed unlawfully or by unauthorised persons (Note 3).

Note 1

The vehicle inspector must notify NZTA using the [vehicle report form](#) if there is reason to believe that the VIN or chassis number has been tampered with in any way.

The vehicle inspector must not issue a WoF/CoF/permit until approved by NZTA. Approval will usually include the issue or re-issue of a new VIN plate.

The vehicle inspector must not issue a WoF/CoF/permit if there is reason to believe that the VIN or chassis number has been tampered with in any way.

Refer the vehicle to a VIN issuing agent ([VTNZ](#), [VINZ](#), [NZAA](#), [Drivesure](#), [CVC](#), [Autochecks](#)). They will inspect the vehicle and seek approval from NZTA to issue or re-issue a VIN plate. Once the vehicle has been approved the vehicle may continue through the inspection process.

Note 2

A valid VIN is a unique number that has been assigned to the vehicle in the vehicle's country of origin or by a person appointed by the NZTA. It consists of 17 characters that never contain the letters I, O or Q, and that is capable of being decoded to provide identifying information about the vehicle.

Note 3

The vehicle inspector must advise the local police if there is reason to believe that the VIN or chassis number has been tampered with in any way.

Note 4

If the vehicle is failed because the VIN/chassis is missing or unreadable, then 'not found' must be recorded in place of the VIN number on the checksheet.

Note 5

An LVV certification plate will always have a VIN or chassis number engraved onto it. The vehicle's Waka Kotahi- or OEM-issued 17 digit VIN (or chassis number for vehicles first registered before 1989) is always considered to be the primary identifier, and vehicle inspectors should verify that the details recorded on the LVV certification plate match.

A vehicle's registration number plate that does not match the registration plate number engraved on the LVV certification plate is not considered a reason for rejection, provided the vehicle's primary identifiers (17 digit Waka Kotahi- or OEM-issued VIN or chassis numbers) match.

Table 1-1-1. Location of VIN numbers

Vehicle	Permitted VIN Locations
Motorcycles	<ul style="list-style-type: none">• On the frame under the rider's seat, or• a non-removable part of the mainframe in a position where it is visible but not prone to damage.

Figure 1-1-1. Structure of a VIN issued by the NZ Transport Agency

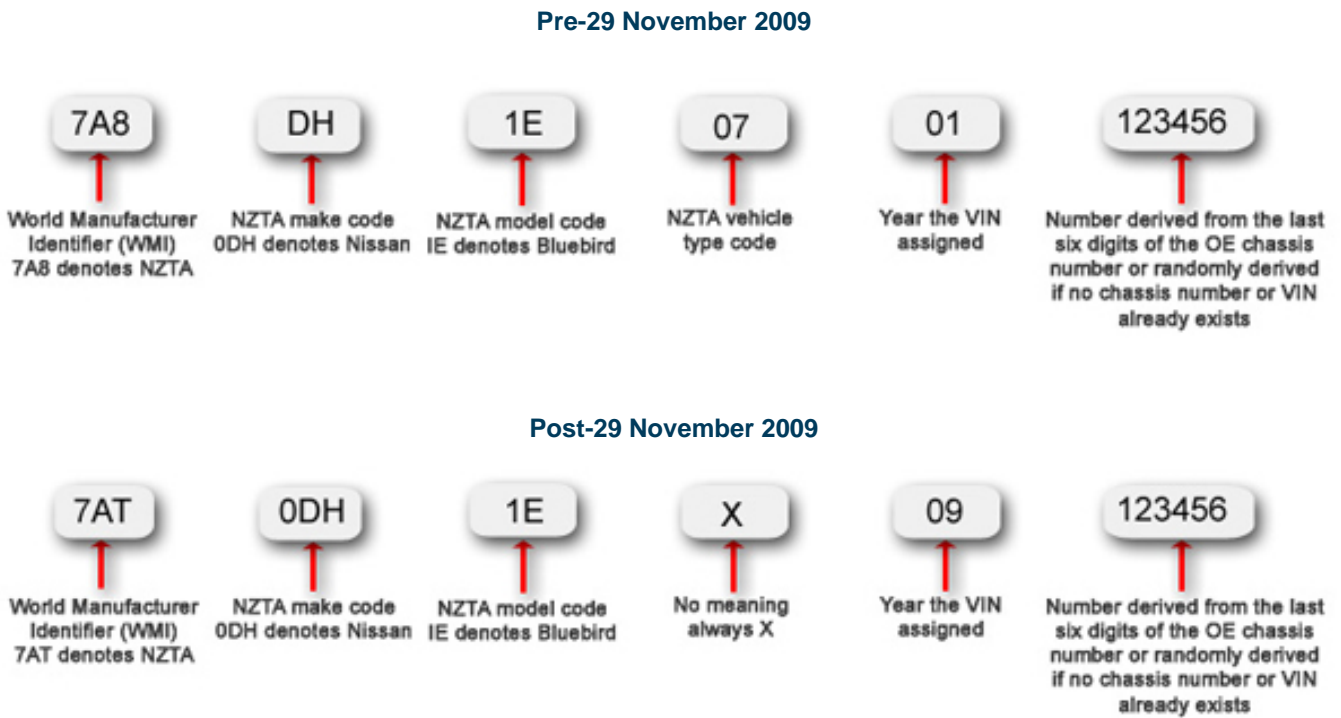
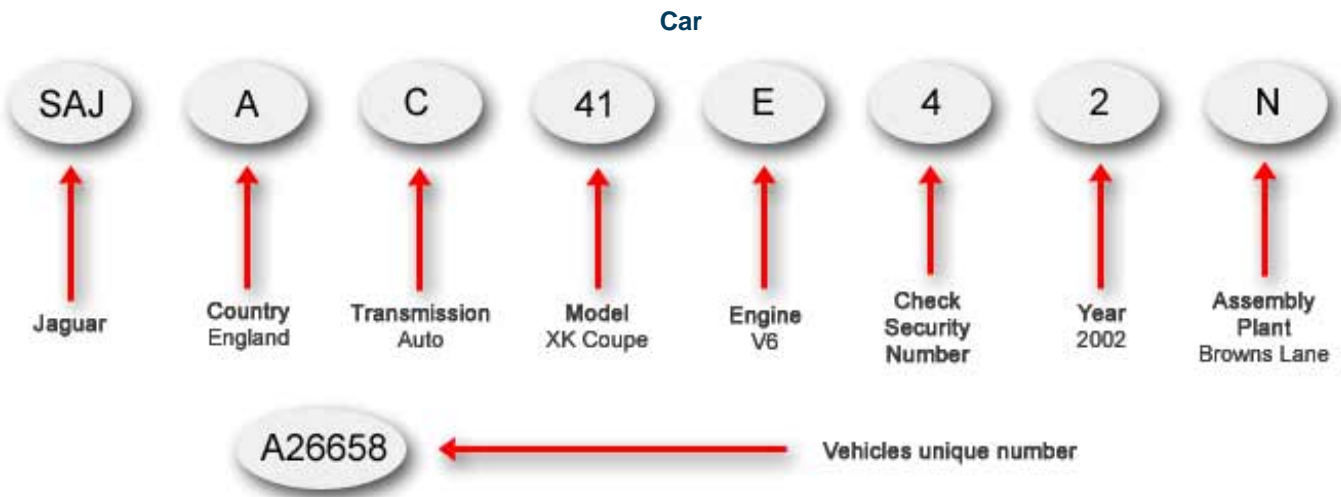
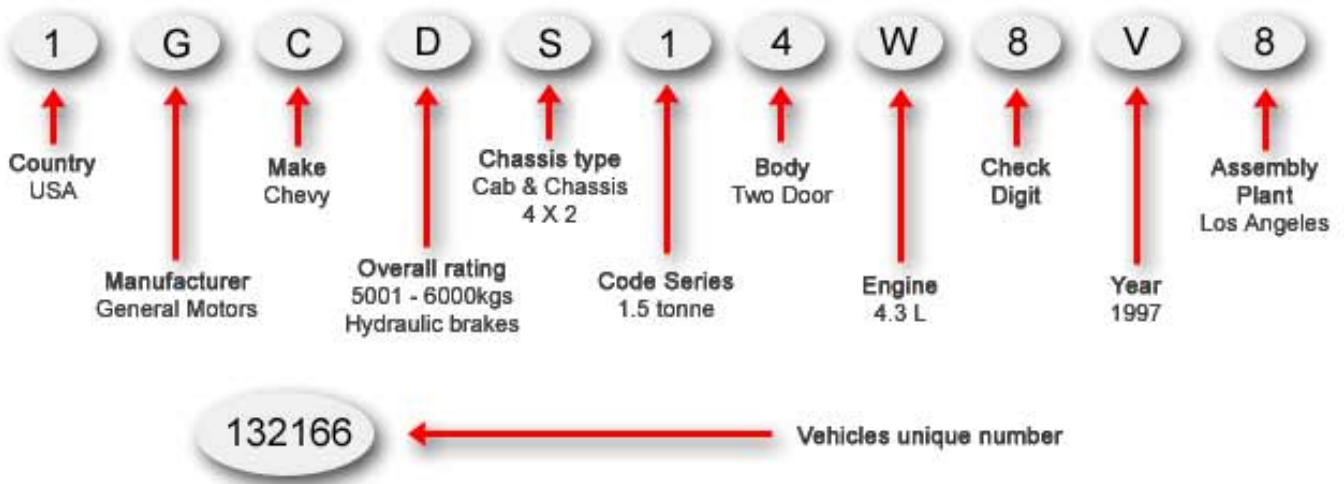


Figure 1-1-2. Structure of a VIN issued by the vehicle manufacturer



Truck



Summary of legislation

Applicable legislation

- [Land Transport Rule: Vehicle Standards Compliance 2002.](#)

Mandatory requirements

1. A vehicle first registered or re-registered in New Zealand before 1 April 1994 must have a chassis number or VIN.
2. A vehicle first registered or re-registered in New Zealand from 1 April 1994 must have a VIN.

Condition

3. A VIN or chassis number must not have been removed, erased, altered, defaced, obscured, destroyed, obliterated or affixed unlawfully, or be unauthorised.

Page amended 1 October 2022 (see [amendment details](#)).