

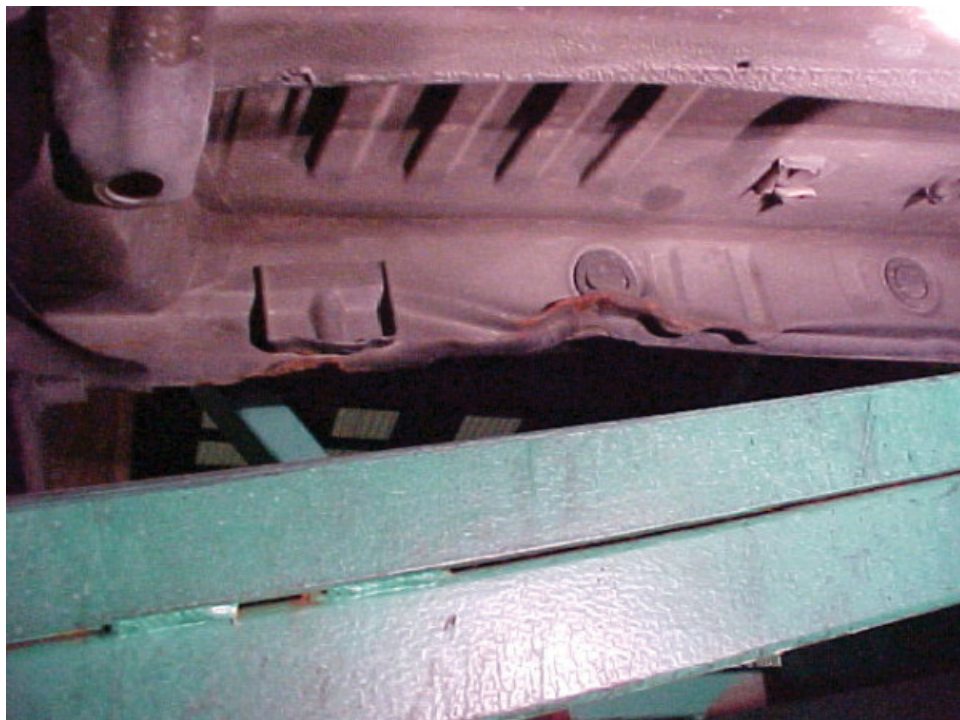
Correct as at 25th April 2026. It may be superseded at any time.

Extract taken from: Border inspection of imported used vehicles > Reference materials > Examples of major structural damage and corrosion > Damage to rocker panels and cant rails

5-4 Damage to rocker panels and cant rails

Damage to rocker panels and cant rails

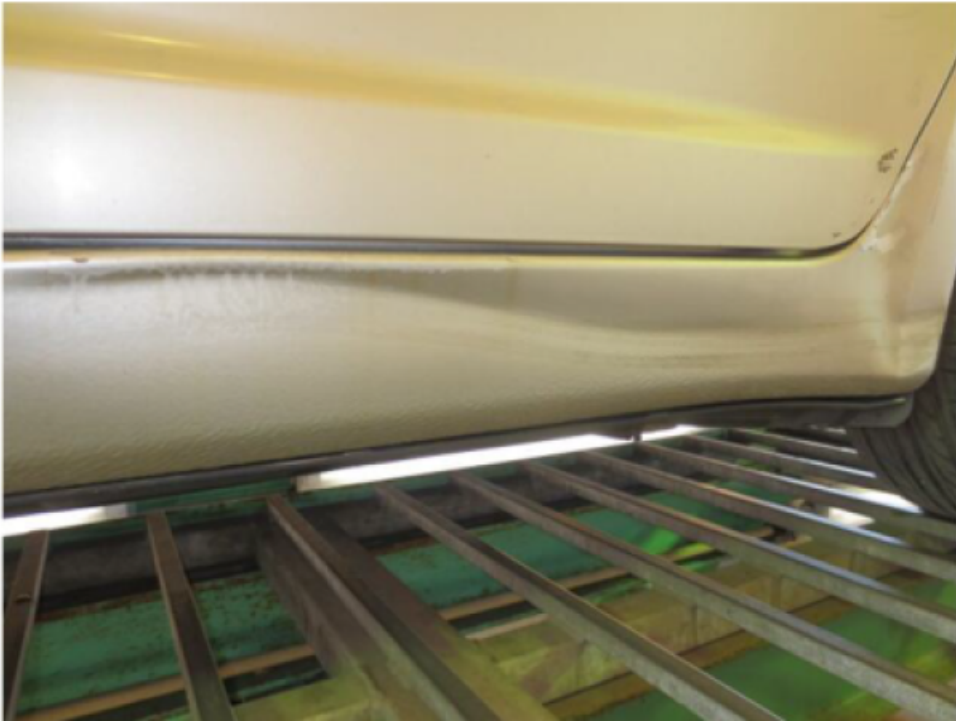
Rocker panels

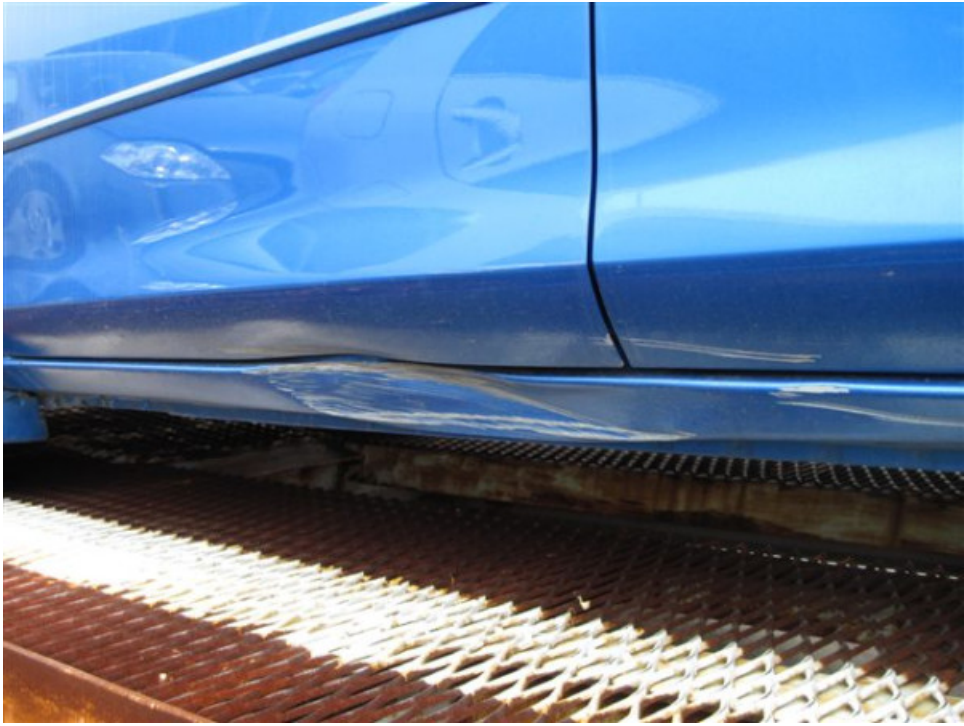












Cant rails



Page amended 1 October 2023 (see [amendment details](#)).