

Correct as at 25th April 2026. It may be superseded at any time.

**Extract taken from:** In-service certification (WoF and CoF) > Technical bulletins (general) > Webbing clamp seatbelts in class MA vehicles

## 5 Webbing clamp seatbelts in class MA vehicles

### Reference

- [General vehicles, 7-5 Seatbelts and seatbelt anchorages.](#)

### Application

This bulletin applies to class MA vehicles fitted with a single- (R1) or dual- (R2) sensitive retractor seatbelt in a front outer seating position where that seatbelt has failed a WoF or CoF inspection.

This bulletin does not apply to vehicles:

- fitted with airbags as original equipment
- not listed in Table 5-1-1 (ie, where the fitting of webbing clamp seatbelts has not been approved by the vehicle manufacturer)
- that are required to comply with an approved frontal impact standard, ie vehicles with a GVM of 2500kg or less that were:
  - manufactured on or after 1 March 1999
  - first registered in New Zealand on or after 1 April 2002 that were less than 20 years old at the time of first registration in New Zealand
- with OE specification seatbelts that have features specifically designed to operate in conjunction with other parts of an integrated occupant protection system
- in which the fitting of a webbing clamp seatbelt would require modifications to the vehicle structure.

### Safety concern

The seatbelts commonly referred to as 'webbing clamp' or 'webbing grabber' seatbelts have features that minimise uncontrolled webbing payout after the locking mechanism has been activated. This ensures that vehicle occupants are kept firmly in their seats in a crash. When installing a new seatbelt after the previous one has failed during a WoF or CoF inspection, a webbing clamp seatbelt is the safest option for many vehicles.

### Inspection

A failed type R1 or R2 retractor seatbelt in a front outer seating position must be replaced with a webbing clamp seatbelt (see Figure 5-1-1) unless a webbing clamp seatbelt is not readily available (see Note 1), or the vehicle inspector has confirmation that the vehicle is one to which this bulletin does not apply.

### Note 1

A seatbelt is considered not readily available where, eg, an automotive parts retailer normally able to supply webbing clamp seatbelts does not currently have the correct webbing clamp seatbelt in stock and cannot supply one within two working days by courier from the parts supplier. The vehicle operator must supply proof that the webbing clamp seatbelt was not readily available, eg an invoice from the seatbelt installer or retailer.

Vehicle inspectors must enter the inspection result as outlined in the flowchart in Figure 5-1-2.



Figure 5-1-1. Example of a webbing clamp seatbelt label



**Manufactured By  
Autoliv Australia Pty. Ltd.**



**Australian  
Standard**

**AS/NZS 52596 Lic. No. 20  
Standards Australia**

**Part No. 511561064\***

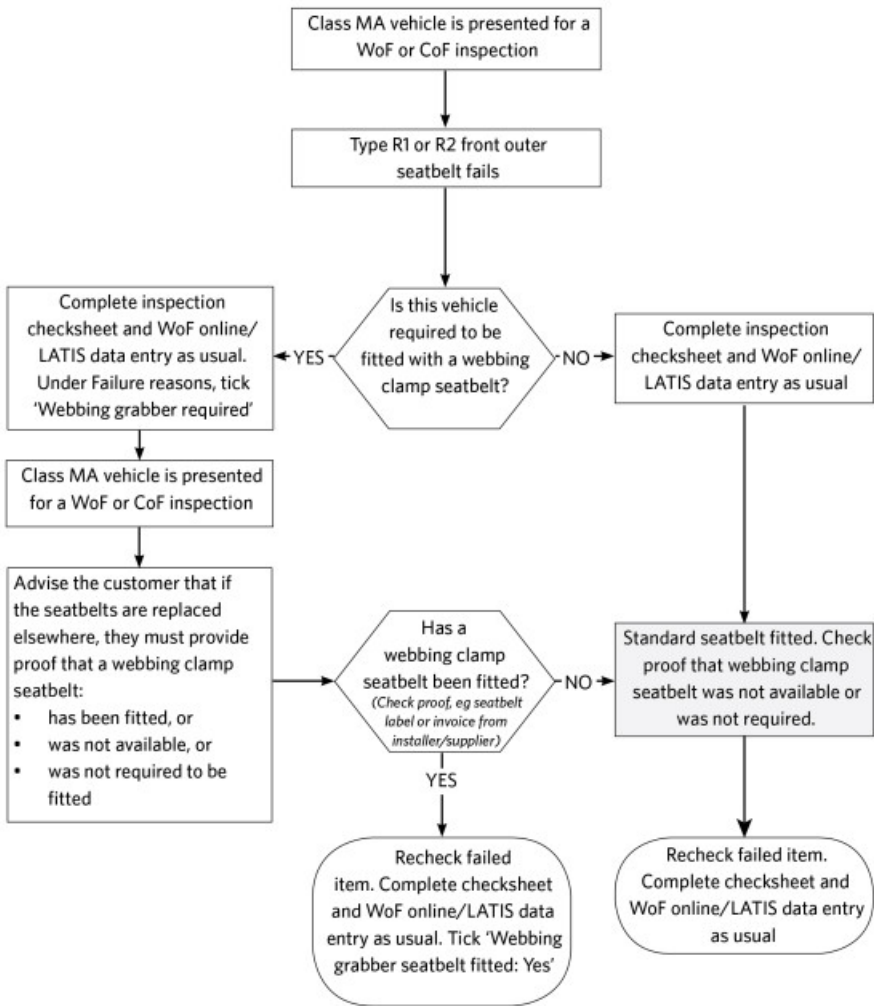


Figure 5-1-2. Webbing grabber seatbelt inspection process

**Table 5-1-1. Vehicles generally approved for the fitment of webbing clamp seatbelts**

<b>Brand</b>	<b>Model</b>	<b>Variant</b>	<b>Model Code</b>	<b>Configuration</b>	<b>Year</b>
Audi	100	2.2L Quattro		4 Door Sedan	1985–1989
Audi	100	Avant, Quattro		4 Door S/Wagon	1985–1991
Audi	100	CD Avant		4 Door S/Wagon	1985–1991
Audi	100	CD, CC, CS, E, EE	WAUZZ	4 Door Sedan	1983–1991
Audi	200	CD, CC, CS, E, EE	WAUZZ	4 Door Sedan	1983–1991
BMW	318		E30	4 Door Sedan	1983–1991
BMW	518		E34	4 Door Sedan	1988–1992
BMW	520		E34	4 Door S/Wagon	1992–1996
BMW	520		E34	4 Door Sedan	1988–1999
BMW	525		E34	4 Door S/Wagon	1992–1996
BMW	525		E34	4 Door Sedan	1988–1999
BMW	535		E34	4 Door Sedan	1988–1992
BMW	540		E34	4 Door S/Wagon	1992–1996
BMW	540		E34	4 Door Sedan	1993–1999
BMW	730		E32	4 Door Sedan	1985–1994
BMW	735		E32	4 Door Sedan	1985–1994
BMW	740		E32	4 Door Sedan	1985–1994
BMW	750		E32	4 Door Sedan	1988–1994

Brand	Model	Variant	Model Code	Configuration	Year
Daihatsu	Charade			2 Door Hatch	1983–1987
Daihatsu	Charade	CS	G11	4 Door Hatch	1983–1988
Daihatsu	Charade	CS, CX Turbo, TS	E-G112S	2 Door Hatch	1987–1993
Daihatsu	Charade	CS, CX Turbo, TS	E-G100	2 Door Hatch	1987–1993
Daihatsu	Charade	CS, CX Turbo, TS	E-G102	2 Door Hatch	1987–1993
Daihatsu	Charade	CX, TL, CS, Turbo	E-G100	4 Door Sedan	1983–1987
Daihatsu	Charade	LS, LX, EX	E-G200	4 Door Hatch	1993–1998
Daihatsu	Charade	LS, LX, EX	E-G203	4 Door Hatch	1993–1998
Daihatsu	Charade	LS, LX, EX	E-G213	4 Door Hatch	1993–1998
Daihatsu	Charade	SEI	E-G203S	4 Door Sedan	1995–1997
Daihatsu	Charade	SEI	E-G200S	4 Door Sedan	1995–1997
Daihatsu	Charade	TS (white only)		2 Door Hatch	1991–1991
Daihatsu	Mira	850 4WD	L201	2 Door Sedan	1990–1993
Daihatsu	Mira	LS, LX	L201	4 Door Sedan	1990–1998
Daihatsu	Mira	LS, LX	L500	4 Door Sedan	1990–1998
Daihatsu	Mira	LS	L8ORS	4 Door Hatch	1986–1990
Fiat	Punto	55 SX	ZFA176	4 Door Liftback	1994–1995
Fiat	Punto	55, GT	ZFA176	2 Door Hatch	1994–1995
Ford	Autozam			4 Door Sedan	1991–1997

Brand	Model	Variant	Model Code	Configuration	Year
Ford	Autozam	AZ-3		2 Door Coupe	1991–1997
Ford	Capri	XRS, Barchetta		2 Door Convert	1990–1994
Ford	Clef			4 Door Sedan	1991–1997
Ford	Fairlane		EA	4 Door Sedan	1988–1993
Ford	Falcon	S	EF	4 Door S/Wagon	1989–1993
Ford	Falcon	S	EB	4 Door Sedan	1989–1993
Ford	Falcon	S	EB	4 Door S/Wagon	1989–1993
Ford	Falcon	S	ED	4 Door S/Wagon	1989–1993
Ford	Falcon	S	ED	4 Door Sedan	1989–1993
Ford	Falcon	S	EF	4 Door Sedan	1989–1993
Ford	Falcon		EA	4 Door S/Wagon	1988–1990
Ford	Falcon		XG	4 Door S/Wagon	1985–1993
Ford	Falcon		XG	4 Door Sedan	1985–1993
Ford	Falcon		EA	4 Door Sedan	1988–1990
Ford	Festiva	S, Trio, GLXi	E-D23	2 Door Hatch	1993–2001
Ford	Festiva	S, Trio, GLXi	E-D25PF	2 Door Hatch	1993–2001
Ford	Festiva	Trio, GLXi	DAFP3	2 Door Hatch	1995–1998
Ford	Festiva	Trio, GLXi	DAFP3	4 Door Hatch	1995–1998
Ford	Festiva		E-DA3PF	4 Door Hatch	1985–1993

Brand	Model	Variant	Model Code	Configuration	Year
Ford	Festiva		E-DA3PF	2 Door Hatch	1985–1993
Ford	Laser	1.3C	LO3	2 Door Hatch	1987–1990
Ford	Laser	1.5 Sport		2 Door Hatch	1983–1987
Ford	Laser	GL	L04	4 Door Liftback	1992–1994
Ford	Laser	L	L05	2 Door Hatch	1986
Ford	Laser	Sport		2 Door Hatch	1981–1984
Ford	Laser	TX3	KF	2 Door Hatch	1990–1994
Ford	Laser		BF5PF	4 Door S/Wagon	1990–1994
Ford	Laser		BG8PF	4 Door Sedan	1990–1995
Ford	Laser		KH	4 Door Sedan	1990–1995
Ford	Laser		BG6PF	4 Door Sedan	1992–1994
Ford	Laser		KF	4 Door Sedan	1990–1995
Ford	Laser		BG5PF	4 Door Sedan	1990–1993
Ford	Laser			2 Door Hatch	1987–1989
Ford	Ltd		XE	4 Door Sedan	1981–1988
Ford	Ltd		XF	4 Door Sedan	1981–1988
Ford	Ltd		EB	4 Door Sedan	1991–1993
Ford	Ltd		EA	4 Door Sedan	1988–1993
Ford	Mondeo		WFOX	4 Door Sedan	1993–1994

<b>Brand</b>	<b>Model</b>	<b>Variant</b>	<b>Model Code</b>	<b>Configuration</b>	<b>Year</b>
Ford	Mondeo		WFOX	4 Door S/Wagon	1993–1994
Ford	Sierra			4 Door Sedan	1985–1992
Ford	Sierra	Cosworth	S15/88B	4 Door Liftback	1988–1992
Ford	Sierra	GLX	S15/90BB	4 Door S/Wagon	1988–1992
Ford	Sierra	XR 4X4	S15/85BB	4 Door Liftback	1985–1992
Ford	Sierra			4 Door S/Wagon	1984–1988
Ford	Taurus			4 Door Sedan	1992–1994
Ford	Telstar	GL	E-GEFPF	4 Door S/Wagon	1993–1997
Ford	Telstar	GLi, GLEi, Ghia	C-HIAVE	4 Door Sedan	1992–1997
Ford	Telstar	V6 XRi	GEEPF, T77		