

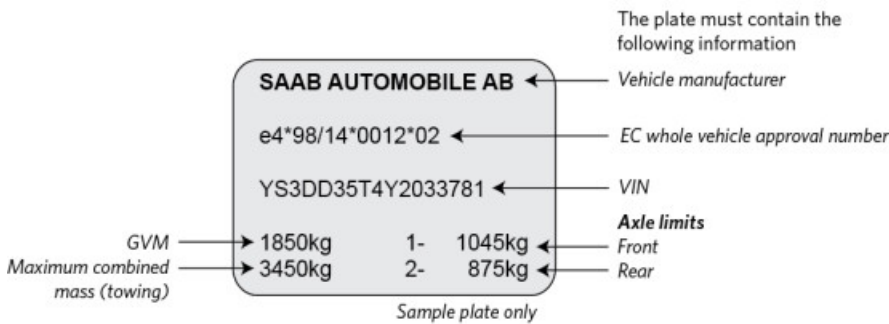
Correct as at 25th April 2026. It may be superseded at any time.

Extract taken from: Entry certification > Reference materials > Sample European Community (EC) whole vehicle approval plates

29 Sample European Community (EC) whole vehicle approval plates

Excluding motorcycles

Identifying the EC whole vehicle approval plate - except motorcycles and mopeds



The EC whole vehicle approval number

e4*98/14*0012*02

[Optional]

The number of the extension to the original type approval
 00 = original approval
 01 = 1st extension
 02 = 2nd extension, etc.

Model specific approval number.
 This is a simple four-digit number unique to the vehicle model.

The amendment of the EC whole vehicle approval directive to which the vehicle has been approved. This will always consist of two individual numbers separated by a "/".

Note: This number may appear to refer to a particular EC system or standard. However, it does not necessarily indicate compliance with that standard.

European community (EC) standards mark. This consists of a lowercase "e" followed by a one- or two-digit number.

Note 1

Any directive number in the whole vehicle approval number is acceptable to prove compliance with all standards requirements with the exception of frontal impact and emissions.

Note 2

If the number is Framework directive 2001/116 or one of its higher amendments, it will prove compliance with all required standards and also frontal impact and emissions to Euro 3. If the number is frame work directive 2007/46, or 2018/858/EC, or one of its higher amendments, it will prove compliance with all required standards and also frontal impact and emissions to Euro 4. The current higher amendment numbers are:

2007/37	2007/46	285/2009	595/2009corr
2010/19	1060/2008	385/2009	595/2009
661/2009	371/2010	2018/858	

Note 3

The following directive numbers are **not** acceptable to prove compliance with all standards. An [exemption](#) to land transport rules is required, which will require evidence such as a European certificate of conformity (CoC) and test reports to demonstrate that requirements have been substantially complied with and that further compliance is unnecessary.

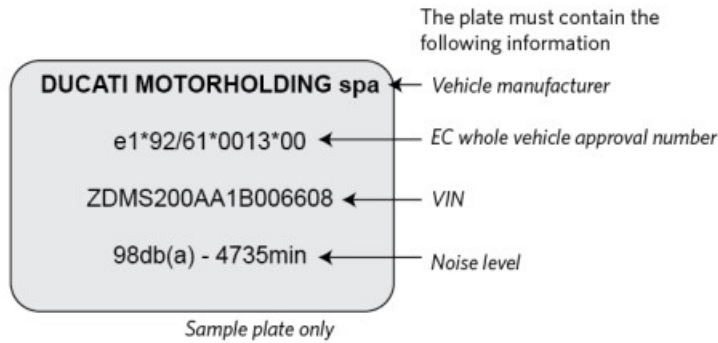
KS/46	KS07/46	KS18/858
-------	---------	----------

Note 4

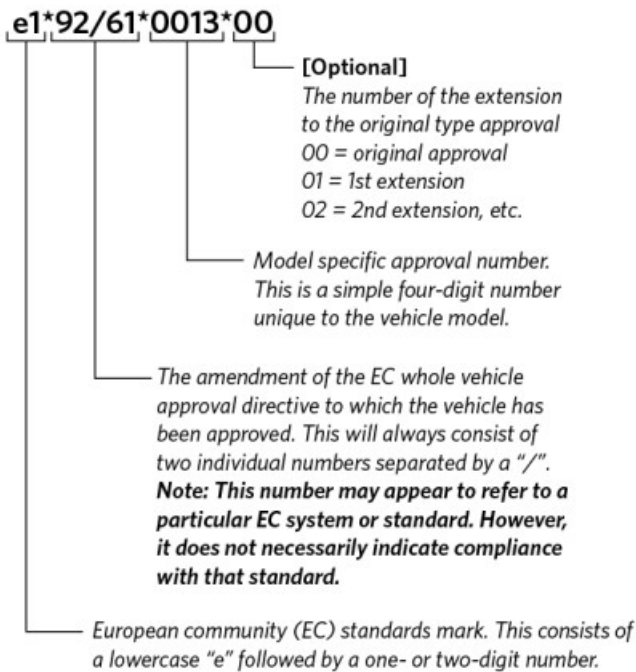
The model specific number in the samples above may be 4 or 5 digits dependant on year of type approval. This is a sequential number unique to the country that issued that type approved for the vehicle (eg *0012* SAAB 9000, or *00086* Tesla Model S).

Motorcycles and mopeds

Identifying the EC whole vehicle approval plate - motorcycles and mopeds



The EC whole vehicle approval number



Note 1

Listed below are examples of the acceptable 'base directive/regulation numbers' shown in the EC whole vehicle approval number which are acceptable to prove compliance with all standards, **except emissions**:

92/61	2002/24	2009/67	168/2013
-------	---------	---------	----------

- [Sample European Community \(EC\) whole vehicle approval plate](#) (PDF | 285KB)