


Correct as at 25th April 2026. It may be superseded at any time.

Extract taken from: Entry certification > Reference materials > Sample Federal Motor Vehicle Safety Standard - FMVSS - compliance plate/label

30 Sample Federal Motor Vehicle Safety Standard - FMVSS - compliance plate/label

MFD BY	DAIMLER CHRYSLER CORPORATION	DATE OF MFR	3-04	GVWR	2881 kg (06350 lb)
GAWR FRONT	WITH TIRES	RIMS AT	COLD		
1656 kg (3650 lb)	P305/40R22 BSW	22 x 10.0	262 KPA (38 PSI)		
GAWR REAR	WITH TIRES	RIMS AT	COLD		
17706 kg (3900 lb)	0305/40R22 BSW	22 x 10.0	262 KPA (38 PSI)		
THIS VEHICLE CONFORMS TO ALL APPLICABLE FEDERAL MOTOR VEHICLE SAFETY AND THEFT PREVENTION STANDARDS IN EFFECT ON THE DATE OF MANUFACTURE SHOWN ABOVE					
VIN: 3D3HA16H746220649			TYPE: TRUCK SINGLE x DUAL		
					
MDH: 031263 478AB PNT: PR4 VEHICLE MADE IN MEXICO TRM: D2DV 4646527					



MFD BY GENERAL MOTORS OF CANADA LTD.

DATE	GVWR	GAWR FRT	GAWR RR
09/11	2122 KG 4678 LB	996 KG 2195 LB	1126 KG 2483 LB

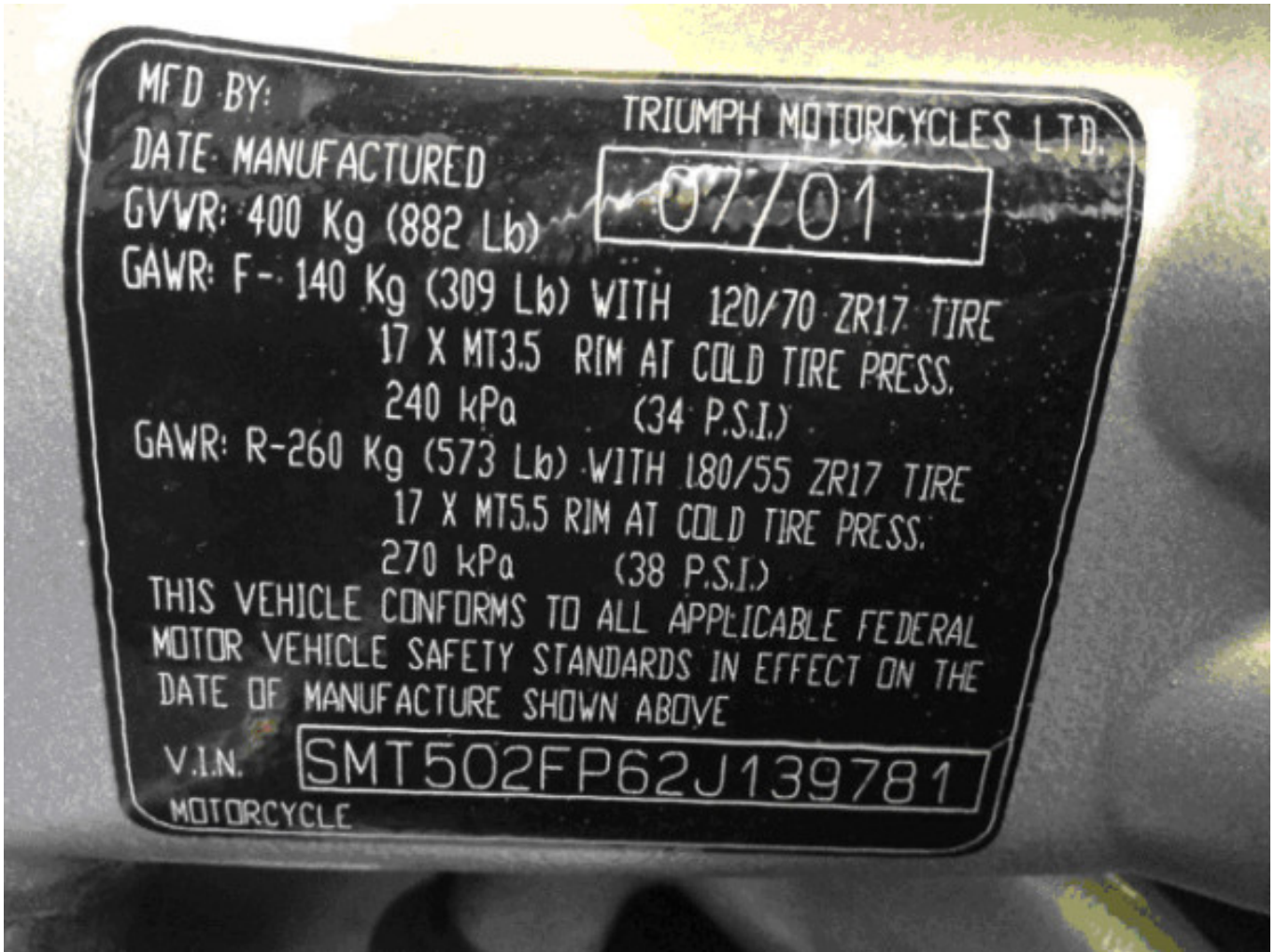


THIS VEHICLE CONFORMS TO ALL APPLICABLE U.S. FEDERAL MOTOR VEHICLE SAFETY, BUMPER, AND THEFT PREVENTION STANDARDS IN EFFECT ON THE DATE OF MANUFACTURE SHOWN ABOVE.

2G1FT1EW1C9122289

TYPE: PASS CAR

Sample FMVSS compliance plate/label



Sample FMVSS compliance plate/label (motorcycle)

Page amended 1 July 2013 (see [amendment details](#)).