

Correct as at 24th April 2026. It may be superseded at any time.

**Extract taken from:** Entry certification > Reference materials > Sample Australian Design Rules - ADR - compliance plates

## 32 Sample Australian Design Rules - ADR - compliance plates

A compliance plate is a small metal plate (typically about 100mm x 50mm, smaller for motorcycles), which is attached to the vehicle. A compliance plate identifies the vehicle by make, model, date of manufacture and Vehicle Identification Number (VIN)/chassis number. Compliance Plates are permanently affixed to vehicles and usually are fitted in vehicle engine bays, on vehicle door pillars or near the passenger side footwell. On motorcycles they are usually attached to steering heads.

Compliance plates are usually **silver** although other colours are sometimes used. However, certain colours are reserved for particular purposes.

- A **red** compliance plate is for a partially completed vehicle (eg chassis-cab)
- A **green** compliance plate is for a vehicle produced in low volume
- A **blue** compliance plate is for low volume trailer
- A **yellow** compliance plate is for a personally imported vehicle.

Although information on a compliance plate may change from time to time, there is one feature which distinguishes it from other plates. That is a statement to the effect that the plate is affixed with the approval of the “Australian Motor Vehicle Certification Board” (AMVCB) or alternatively that the vehicle is “Manufactured to Comply with the Motor Vehicle Standards Act 1989”.

**Motor vehicle standards compliance plates**

**(in use from October 1989 – current style)**

**General use Colour: Other than red, green, blue or yellow**

**Motor vehicles except group L (100mm x 50mm)**

<b>APPROVAL NO.</b> 10023	<b>CATEGORY</b> MA
EPSILON PTY LTD	
DELTA 230 GL	
GVM	SEATS 5
10/89	VIN EAG12345678901234
<b>THIS VEHICLE WAS MANUFACTURED TO COMPLY WITH THE MOTOR VEHICLE STANDARDS ACT 1989</b>	

**Group L vehicles only (95mm x 35mm)**

<b>APPROVAL NO.</b> 10024	<b>CATEGORY</b> LC
EPSILON PTY LTD	
DELTA ZS 350 GL	
10/89	VIN EAG12345678901234
<b>THIS VEHICLE WAS MANUFACTURED TO COMPLY WITH THE MOTOR VEHICLE STANDARDS ACT 1989</b>	

**Trailer Colour: Other than red, green, blue or yellow**

**Motor vehicle standards compliance plates**

**(in use from October 1989 – current style)**

<b>MAKE-MODEL</b>	DELTA ZS-350		
<b>DATE</b>	10/89	<b>ATM</b>	31.50 <b>TONNE</b>
<b>VIN</b>	ABC09876543211234	<b>APPROVAL No.</b>	9200 AA
<b>THIS TRAILER WAS MANUFACTURED BY</b>			
EPSILON TRAILERS PTY LTD			
<b>TO COMPLY WITH THE MOTOR VEHICLE STANDARDS ACT 1989 COMPLIANCE MARK APPROVAL NUMBERS</b>			
9998 CS	9997 FB	9996 SS	
<b>THIS PLATE IS AFFIXED WITH THE APPROVAL OF THE ADMINISTRATOR MOTOR VEHICLE STANDARDS</b>			

**Trailers over 4.5 tonnes ATM (150mm x 90mm)**

**For general use**

**AMVCB Third edition compliance plates**

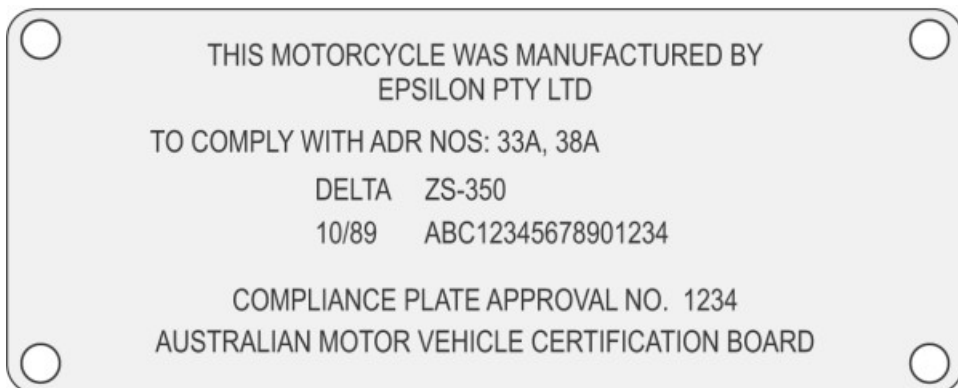
**(in use after 1 July 1988 and until 1 July 1992)**

**General use Colour: Other than red, green, blue or yellow**

**Motor vehicles except motorcycles (90 mm x 90 mm)**



**Motorcycles only (100mm x 40mm)**



**AMVCB Third edition compliance plates**

**(in use after 1 July 1988 and until 1 July 1992)**

**General use** Colour: Other than red, green, blue or yellow

**Motor vehicles except motorcycles (100mm x 50mm)**

APPROVAL NO. 10023	CATEGORY MA
EPSILON PTY LTD	
DELTA 230 GL	
GVM	SEATS 5
10/89	VIN EAG12345678901234
AFFIXED WITH THE APPROVAL OF THE AUSTRALIAN MOTOR VEHICLE CERTIFICATION BOARD	

**Motorcycles only (95mm x 35mm)**

APPROVAL NO. 10024	CATEGORY LC
EPSILON PTY LTD	
DELTA ZS 350 GL	
10/89	VIN EAG12345678901234
AFFIXED WITH THE APPROVAL OF THE AUSTRALIAN MOTOR VEHICLE CERTIFICATION BOARD	