

Correct as at 25th April 2026. It may be superseded at any time.

Extract taken from: Entry certification > Technical bulletins > Moped entry certification (class LA, LB)

35 Moped entry certification (class LA, LB)

Situation

Under the [Land Transport Rule: Vehicle Standards Compliance Amendment 2011](#), a vehicle of class LA or LB is required to undergo entry certification when entering service. A moped first registered in New Zealand prior to 1 July 2011 is exempt from certification and VIN under the Rule. However, they must be confirmed for classification, previous registration and ownership as required by the [Land Transport \(Motor Vehicle Registration and Licencing\) Regulations 2011](#)

Application

This bulletin contains instructions for vehicle inspectors on how to handle entry certification of new, used and re-registered mopeds (class LA, LB).

Definition of a moped

A moped is defined as follows:

<p>LA (moped with two wheels)</p>	<p>A motor vehicle (other than a power-assisted pedal cycle) that:</p> <ul style="list-style-type: none"> a) has two wheels, and b) either: <ul style="list-style-type: none"> i) has an engine cylinder capacity not exceeding 50ml and a maximum speed not exceeding 50km/h, or ii) has a power source other than a piston engine and a maximum speed not exceeding 50km/h.
<p>LB (moped with three wheels)</p>	<p>A motor vehicle (other than a power-assisted pedal cycle) that:</p> <ul style="list-style-type: none"> a) has three wheels, and b) either: <ul style="list-style-type: none"> i) has an engine cylinder capacity not exceeding 50ml and a maximum speed not exceeding 50km/h, or ii) has a power source other than a piston engine and a maximum speed not exceeding 50km/h.

Note 1

In order to determine the maximum speed of a moped, the following documentation may be accepted:

- Statement of Compliance (SoC) from the vehicle manufacture stating the maximum speed, (see 2.1 of Inspection and certification for SOC requirements)
- A letter **or email** from the vehicle manufacturer stating the VIN and maximum speed
- Technical specifications from the vehicle manufacture showing the maximum speed for that particular make and model
- EC Certificate of Conformity (CoC) issued by the vehicle manufacture for individual vehicles that have undergone European Commission Whole Vehicle Type Approval (EC WVTA). The CoC is linked to the EC Whole Vehicle Approval Plate – if a vehicle has a CoC, it will also have a Whole Vehicle Approval Plate.
- A sample CoC is shown in Reference material 49. The maximum speed information is recorded in item 44 of the CoC.

Note 2

The flowcharts under the 'Procedure' tab guide the inspector through the moped certification process:

- new mopeds – [Flowchart A](#)
- used mopeds, never registered in New Zealand – [Flowchart B](#)
- used mopeds, registered in New Zealand before 1 July 2011 – [Flowchart C](#)
- used Mopeds, registered in New Zealand on or after 1 July 2011 – [Flowchart D](#)

Note 3

Vehicles complying with the European vehicle category L1e can be accepted as meeting all class LA moped requirements.

Note 4

There is no requirement to issue a LT4085N or LT4085U at the completion of the inspection process.

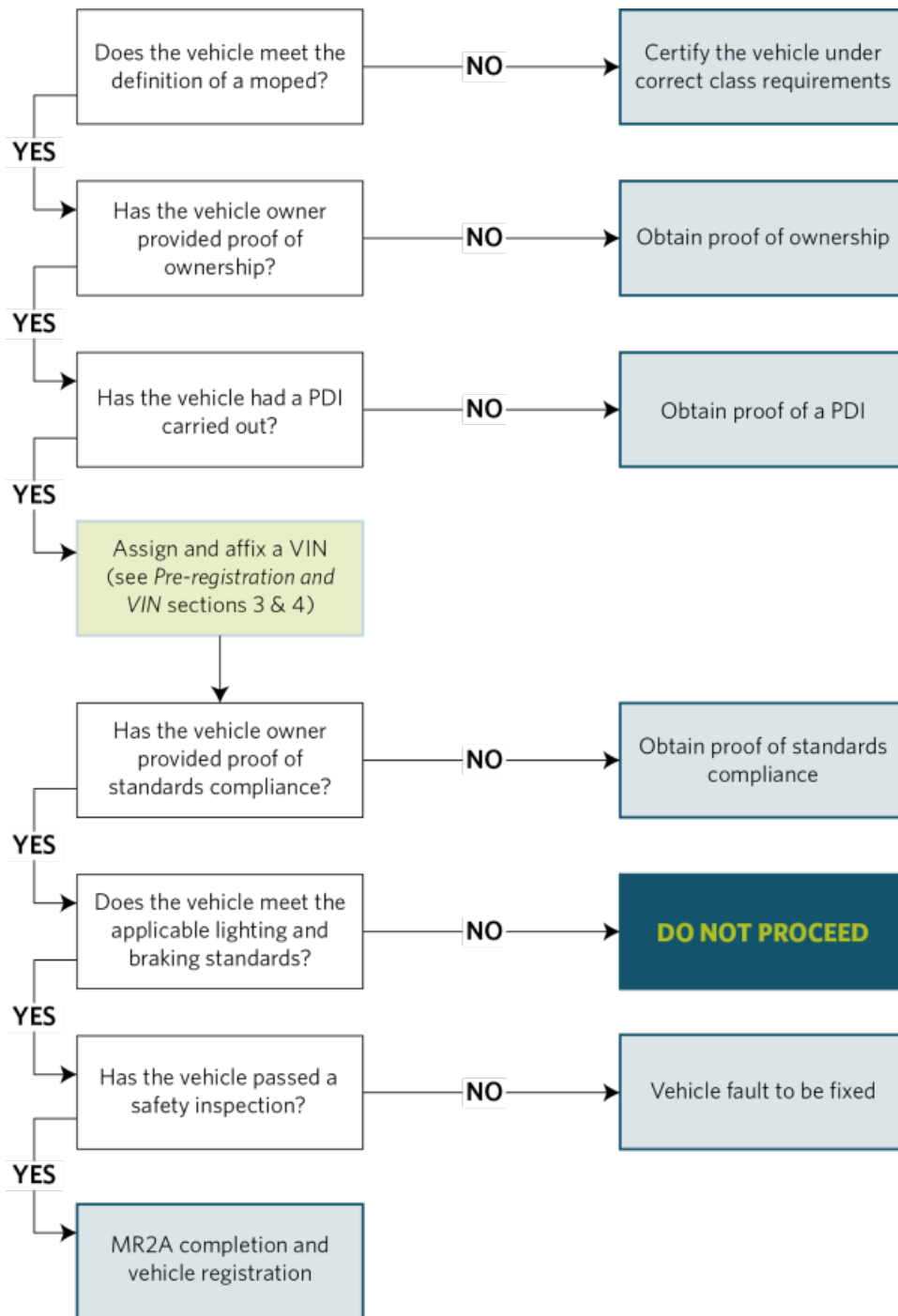
Inspection requirements

The physical inspection of a moped is not required to take place at a Transport Agency approved site. The off-site location must meet the requirements of the inspection premises and equipment in Section 8 of the Introduction, VIRM: Entry certification with the exception of VIN embossing machines. It is the responsibility of the inspecting organisation and the vehicle inspector to ensure that these requirements are met. The physical address of the off-site must be noted in on the vehicle file.

Flowchart A. New parallel imported moped

Inspection requirements

The following flowchart explains the procedure for processing a new parallel imported moped for entry certification.



Note 1

For all documentation requirements see [Required documentation and registration](#).

Note 2

Whilst no warrant of fitness (WoF) is required for a moped, it must still be inspected to ensure it is in a roadworthy condition.

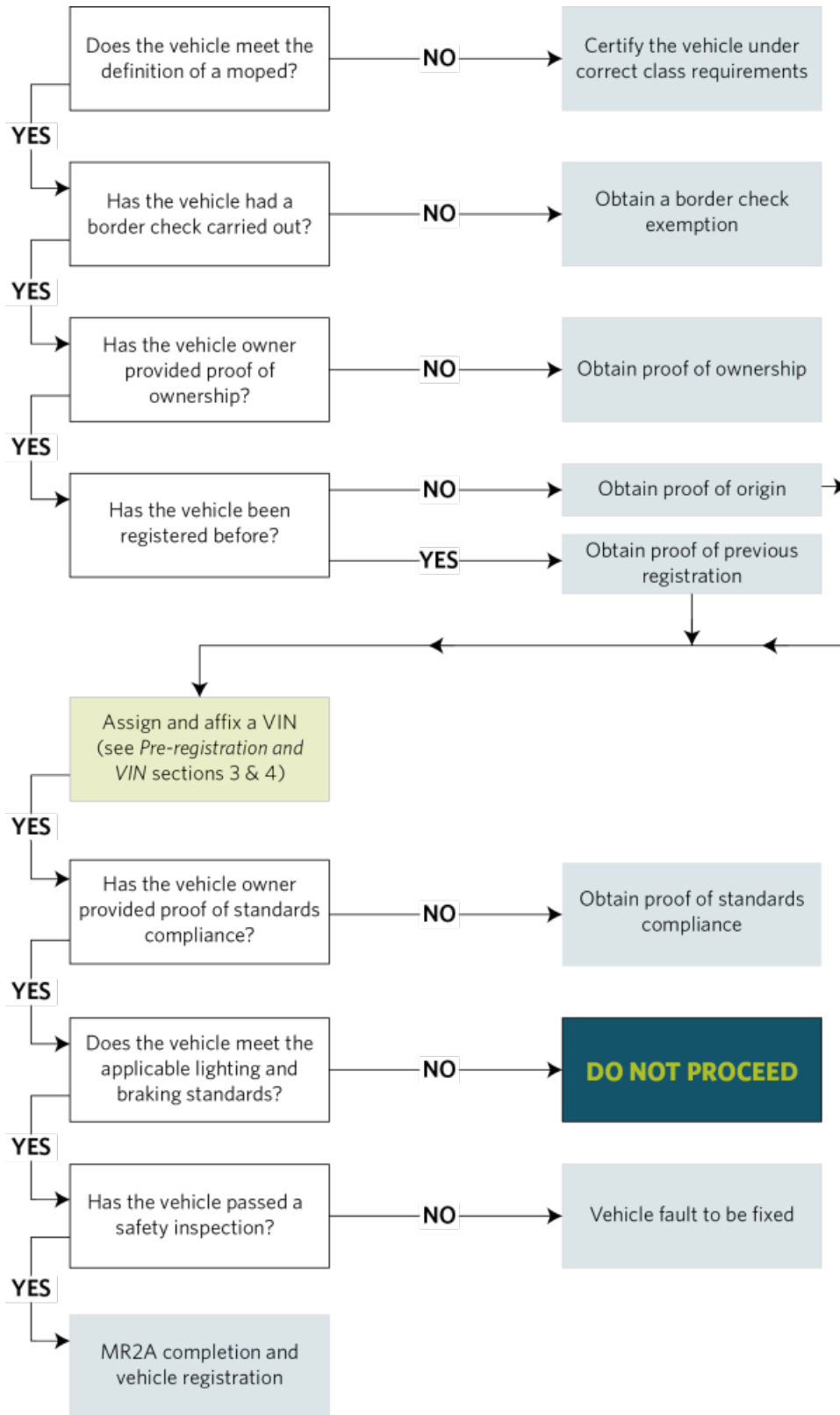
Note 3

A tyre on a moped does not have any tread-depth requirements, but must have a clearly visible tread pattern across at least three-quarters of the width of the tread and around the entire circumference of the tyre.

Flowchart B. Used imported moped

Inspection requirements

The following flowchart explains the procedure for processing a used imported moped for entry certification.



Note 1

A strip-down of the brakes is not required.

Note 2

For all documentation requirements see [Required documentation and registration](#).

Note 3

Whilst no warrant of fitness (WoF) is required for a moped, it must still be inspected to ensure it is in a roadworthy condition.

Flowchart C. Re-registered moped that was first registered in New Zealand before 1 July 2011

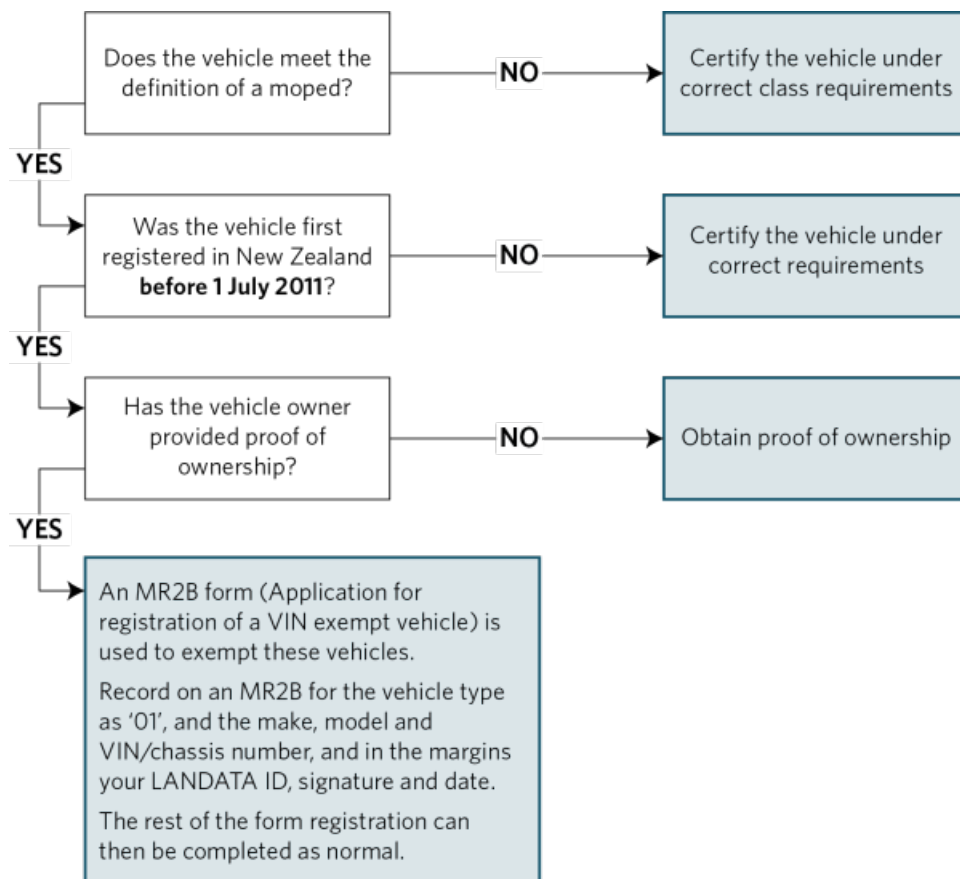
Inspection requirements

The following flowchart explains the procedure for processing a re-registered moped that was first registered in New Zealand before 1 July 2011.

These vehicles are exempt from standards certification and VINs under the Rule, but they must be confirmed as:

1. being a moped (as defined in the VIRM),
2. being previously registered in New Zealand before 1 July 2011, and
3. owned by the person presenting it for re-registration in order to meet the requirements of Regulation 4(1)(f) of the Land Transport (Motor Vehicle Registration and Licencing) Regulations 2011.

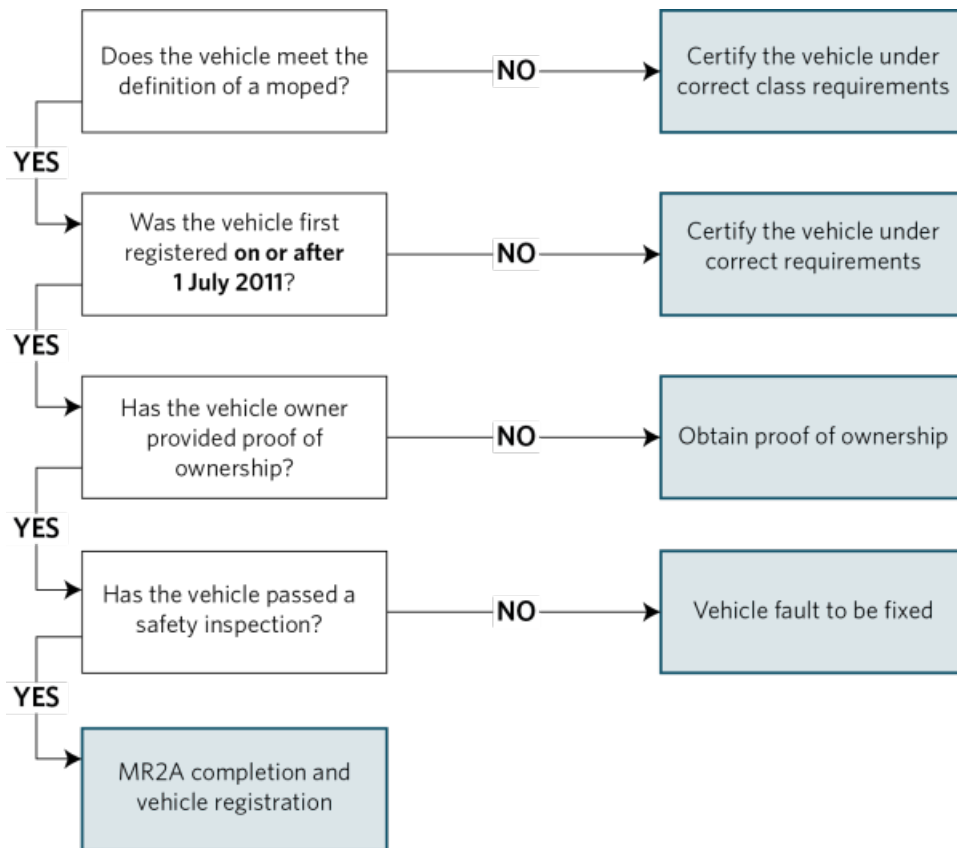
These requirements can be confirmed by a staff member who is appropriately trained and supported and is working at a site authorised for compliance certification of light vehicles for registration and re-registration and is not limited to just an entry certifier.



Flowchart D. Re-registered moped that was first registered in New Zealand on or after 1 July 2011

Inspection requirements

The following flowchart explains the procedure for processing a re-registered moped that was first registered in New Zealand on or after 1 July 2011.



Note 1

A strip-down of the brakes is not required.

Note 2

For all documentation requirements see [Required documentation and registration](#).

Note 3

Whilst no warrant of fitness (WoF) is required for a moped, it must still be inspected to ensure it is in a roadworthy condition.

Note 4

A tyre on a moped does not have any tread-depth requirements, but must have a clearly visible tread pattern across at least three-quarters of the width of the tread and around the entire circumference of the tyre.